

Duke Road, London, W4 2BX

£1,395,000

WHITMAN & CO.

SALES · LETTINGS · COMMERCIAL

- 4/5 Bedrooms
- Landscaped private garden
- Excellent order throughout
- Popular Glebe Estate
- Fantastic transport links
- Tree linked residential road

Tenure - Freehold
Local Authority - Hounslow
Council Tax - Band F

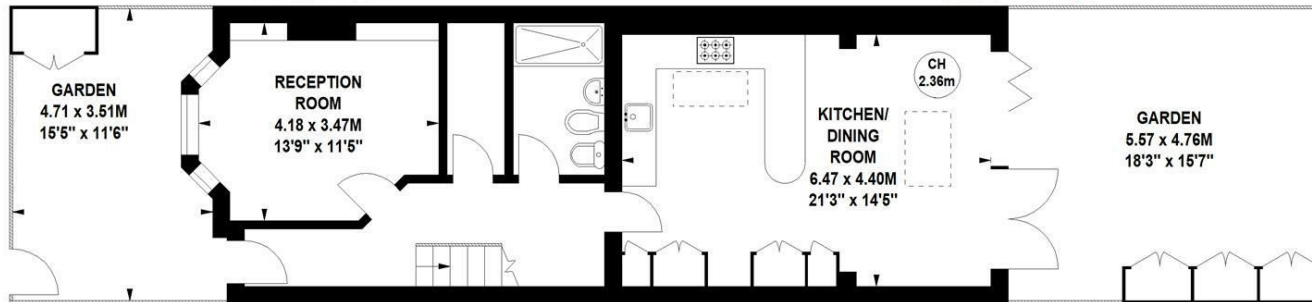
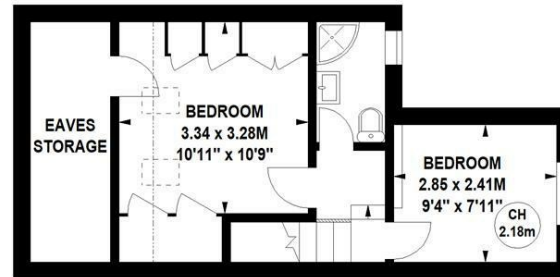
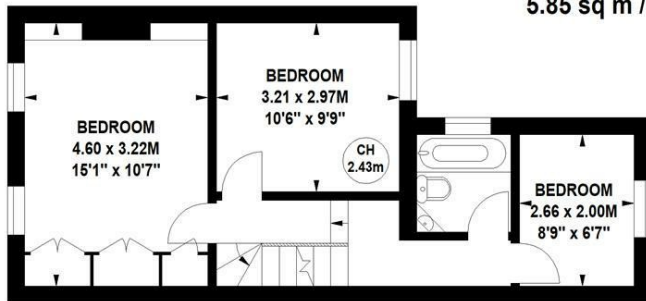
THE PROPERTY

An immaculately presented 4/5 bedroom period house ideally located in this sought after Glebe Estate offering close proximity to numerous amenities. This super property comprises 4/5 bedrooms, two bathrooms, large entrance hall, front reception room, walk in cloak room, ground floor wet room, 21' bespoke kitchen/breakfast room, private landscaped garden and excellent order throughout. Situated in this popular tree lined residential road offering close proximity to tube, bus and rail networks as well as the extensive range of shops bars and restaurants on Chiswick High Road.

Duke Road, W4

Approximate gross internal area
134.80 sq m / 1451 sq ft
(Including Eaves Storage)
Eaves Storage
5.85 sq m / 63 sq ft

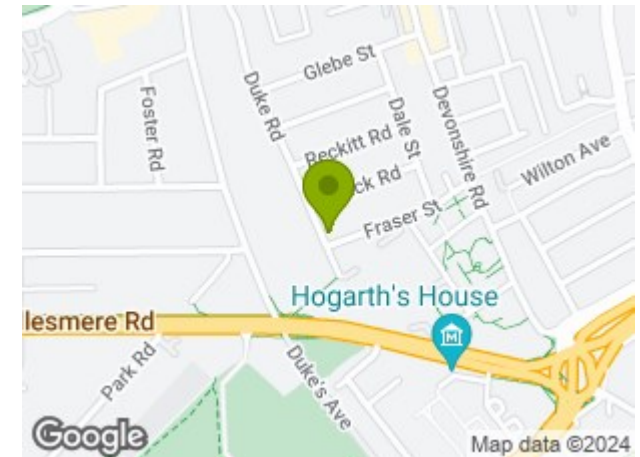
Key :
CH - Ceiling Height



Ground Floor

Not to scale, for guidance only and must not be relied upon as a statement of fact.
All measurements and areas are approximate only

SITUATION



5-7 Turnham Green Terrace, Chiswick, London, W4 1RG

Tel 020 8747 8800

E-mail sales@whitmanandco.com

Website www.whitmanandco.com

